

The National Museum of Modern Art, Kyoto Floor Guide



1



13



2



3



4



5



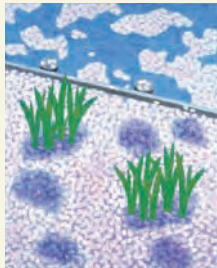
6



12



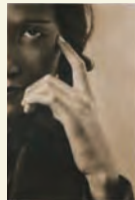
11



10



7



9



8

Collection

The National Museum of Modern Art, Kyoto houses a collection of more than 13,000 works, including many important works of modern and contemporary art. The collection includes Nihonga (Japanese-style paintings) by noted Kyoto artists such as TAKEUCHI Seiho and TSUCHIDA Bakusen; Western-style paintings by artists such as SUDA Kunitaro and YASUI Sotaro; famous paintings by foreign artists such as Pablo PICASSO and Henri MATISSE; and fine works of modern and contemporary pottery and textile. The museum is also notable for the works it has inherited from artists and other collections.

Hours

10:00–18:00 [last admission: 17:30]

Open until 20:00 [last admission: 19:30] on Fridays during special exhibitions.

* Please note that hours are subject to change.

Closed

Mondays (open on holiday Mondays and closed on the following days), during installation periods, and New Year holidays.

* Please note that the museum may be closed without prior notice.

Admission

• Collection Gallery

Adult: 430 (220) yen

University students: 130 (70) yen

* Numbers in parenthesis denote group price (20 or more).

Children under 18 (including high school students), senior citizens (65 and over), and disabled visitors and one attendant will be admitted free of charge when presenting valid identification.

• Special Exhibitions

Admission varies according to exhibition.

Getting to MoMAK

By JR or Kintetsu Train and Bus

• From JR or Kintetsu Kyoto Station (Kyoto-eki-mae Boarding Area A1), take Kyoto City Bus No. 5 (toward Ginkakuji Temple Via Heian-jingu Shrine) to the Okazaki Koen / Bijutsukan, Heian Jingu-mae stop.

By Hankyu or Keihan Train and Bus

• From Hankyu Karasuma Station, Kyoto-Kawaramachi Station or Sanjo-Keihan Station, take Kyoto City Bus No. 5 (toward Ginkakuji Temple Via Heian-jingu Shrine) to the Okazaki Koen / Bijutsukan, Heian Jingu-mae stop.

• From Hankyu Karasuma Station, Kyoto-Kawaramachi Station or Keihan Gion-Shijo Station, take Kyoto City Bus No. 46 (toward Heian-jingu Shrine Via Gion) to the Okazaki Koen / Bijutsukan, Heian Jingu-mae stop.

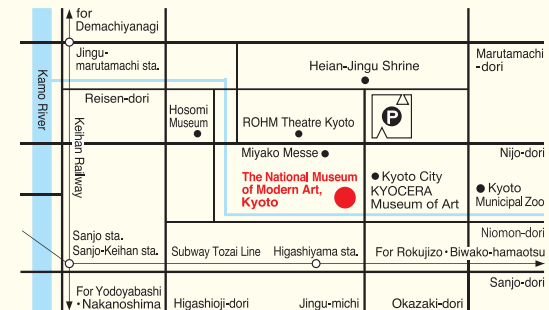
By Other Buses

Get off at the Okazaki Koen / ROHM Theatre, Miyakomesse stop or Higashiyama Nijo, Okazaki Koen-guchi stop, and walk 5 minutes.

By Subway

Get off at Higashiyama Station (on the Tozai Line of the Kyoto Municipal Subway), and walk 10 minutes.

*No parking is available at the museum. Please use the Okazaki Park lot. Paying visitors are eligible for a discount. Please present your parking ticket at the information desk.



The National Museum of Modern Art, Kyoto

Okazaki Enshoji-cho, Sakyo-ku, Kyoto, 606-8344 JAPAN

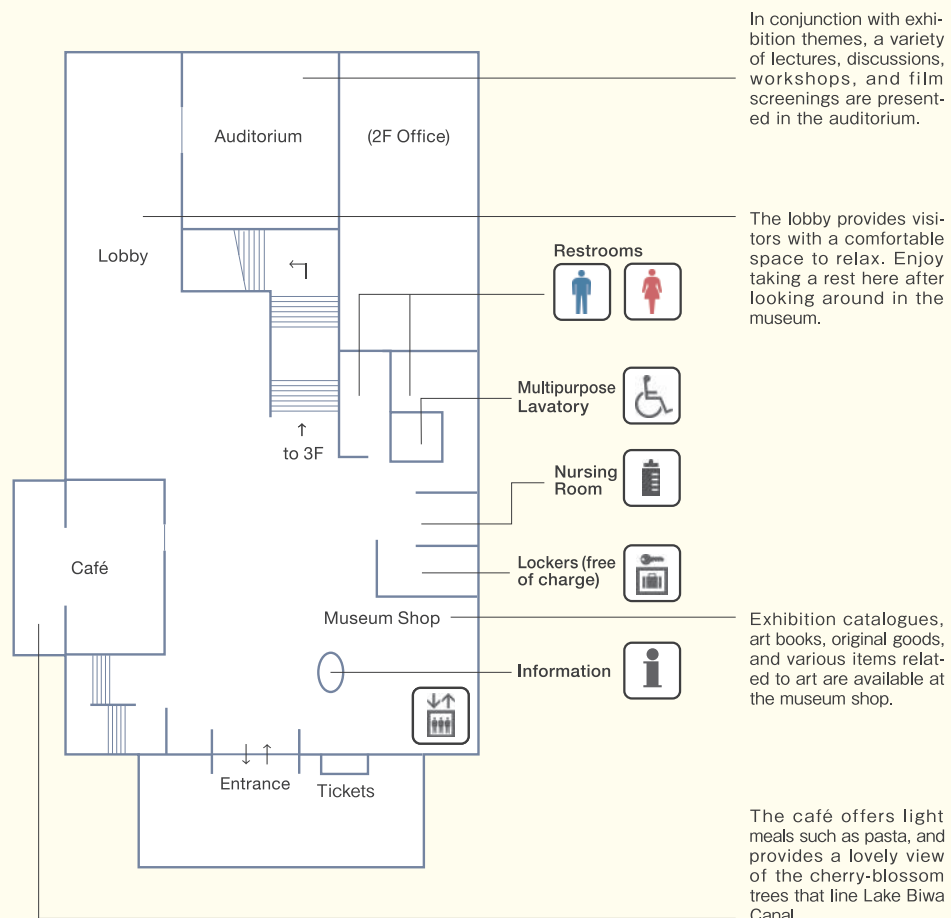
Phone: +81-75-761-4111

<https://www.momak.go.jp/>

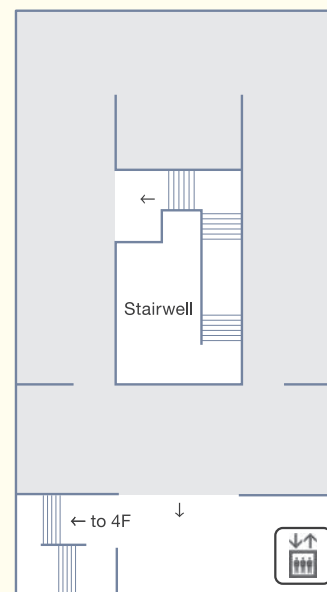
2023.07

1 Piet MONDRIAN, *Composition No.1*, 1929 2 Henri MATISSE, *Small Blue Dress before a Mirror*, 1937 3 IKEDA Masuo, *Sky of Sky*, 1968 4 MORIGUCHI Kako, *Long Sleeve Kimono (Plum Trees)*, 1964 5 KAWAI Kanjiro, *Vase*, 1962 6 YANAGI Miwa, *Elevator Girl House 1F*, 1997 7 YAGI Kazuo, *Distance*, 1974 8 Marcel DUCHAMP, *Fountain*, 1917/1964 Schwarz edition, ed. 6/8 to Succession Marcel Duchamp / ADAGP, Paris & JASPAR, Tokyo, 2016 G0266 9 NOJIMA Yasuzo, *Miss HOSOKAWA Chikako*, 1932 10 FUKUDA Heihachiro, *Study of Fallen Blossoms*, 1961 11 KAINOSHO Tadaoto, *Autumnal Heart*, 1917 12 YOSHIHARA Jiro, *Work (White-spotted Circle on Black Ground)*, 1971 13 YASUI Sotaro, *Peaches*, 1950

1F

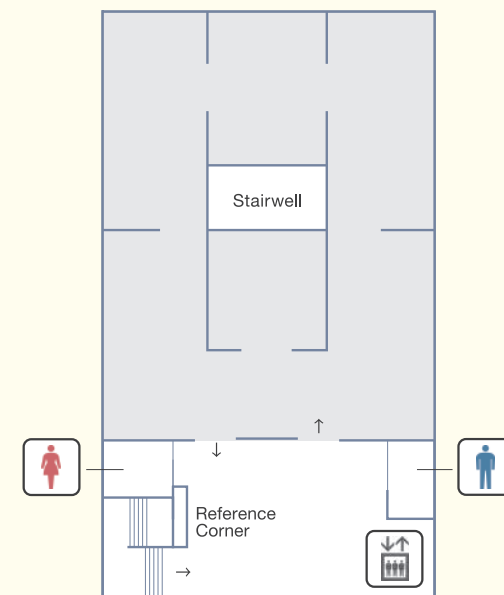


3F Exhibition Gallery



The museum presents about five special exhibitions annually. These include retrospectives of artists who left a significant mark on Japanese modern art, primarily those with links to the Kyoto area; modern art by foreign masters; new perspectives and trends in a wide range of fine arts and crafts both from Japan and abroad; and a variety of design works, including fashion and architecture.

4F Collection Gallery



The Collection Gallery presents mainly representative and monumental works of Japanese modern and contemporary art from the museum's collection of over 13,000 works. Exhibits are changed about five times annually in conjunction with the theme of special exhibitions. There is a rest area and a reference corner on the same floor. In the rest area, you can enjoy a splendid view of the *torii* gate at Heian Shrine and the spectacular Higashiyama mountain range. In the reference corner, you can enjoy reading exhibition catalogues from past events.

The National Museum of Modern Art, Kyoto is located amid the rich greenery of Okazaki Park. Facing the approach to Heian Shrine and Lake Biwa Canal, the museum was originally created in 1963 as the Kyoto annex of the National Museum of Modern Art in Tokyo. Since reopening in a new building in 1986, it has continued to present a wide range of exhibitions. The museum collects, preserves, and displays Japanese and foreign works of modern and contemporary art. It also conducts research in related areas, with a particular emphasis on artists and art movements from Kyoto western Japan. The collection is especially notable for its modern Nihonga (Japanese-style paintings) and crafts by Kyoto-based artists.

