



MORIGUCHI
Kunihiko

Yuzen / Design

Crossroads of
Creativity

Yuzen Design

2020.10.13 tue. - **12.06** sun.

The National Museum of Modern Art, Kyoto

Opening Hours 9:30 AM - 5:00 PM (Fridays and Saturdays: 9:30 AM - 8:00 PM)
*Admission until 30 min. before closing

Closed on Mondays (Exception Nov.23), Nov.24 tue.

Organisers The National Museum of Modern Art, Kyoto; Agency for Cultural Affairs;
Japan Arts Council; Nikkei Inc.; The Kyoto Shimbun

Special Cooperation Isetan Mitsukoshi Holdings

Yuzen kimono, Topological geometric design on white ground, 'Ripening' 2013 Isetan Mitsukoshi Holdings
Some works will be replaced with others while the exhibition is in session.

First Period: October 13–November 8 / Second Period: November 10–December 6



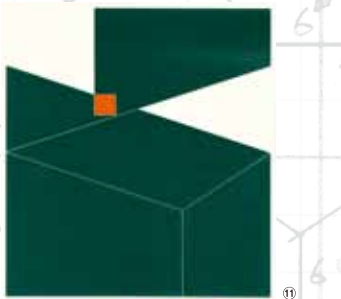
MORIGUCHI Kunihiko



Yuzen / Design

Crossroads of
Creativity

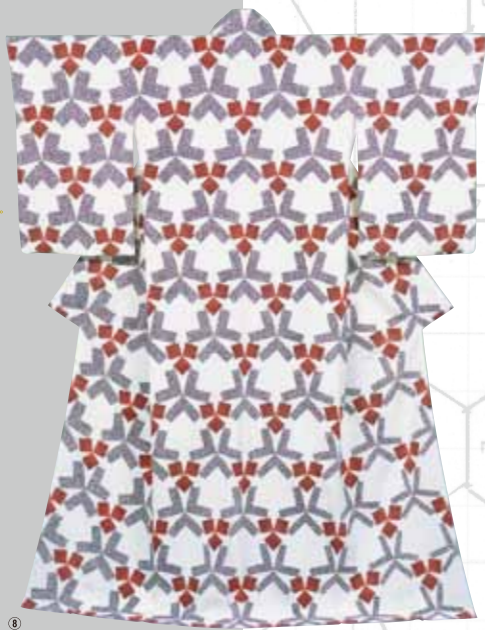
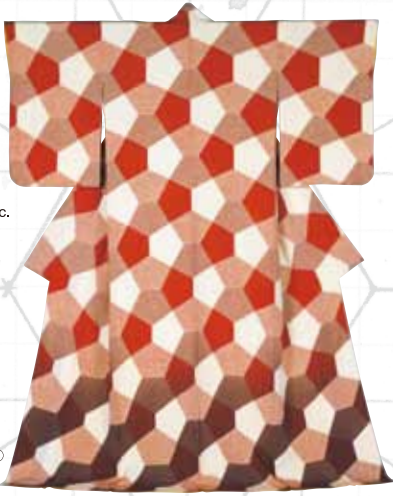
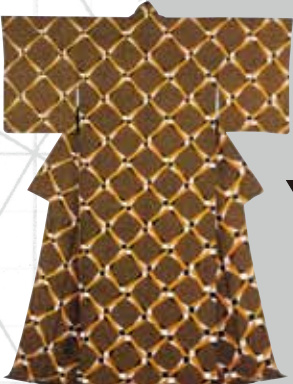
The National Museum of
Modern Art, Kyoto



Related Events
Please visit our website for event information.

Ticket Prices
Adults: 1,000 yen (800 yen)
University students: 500 yen (400 yen)
*Figures in parentheses are advanced ticket and groups of 20 or more and Night discount on Fridays / Saturdays after 5 P.M.
*High school students and younger are free (with valid ID).
*Visitors with disability and one person accompanying them are admitted free of charge. (Please present certificate at the admission.)
*Collection gallery exhibition is available with this ticket.
*Advance tickets are available until October 12.
*Tickets may be purchased from: Ticket Pia (P Code: 685-381), Lawson Ticket (L Code: 52904), major ticket event agencies ('play guides'), convenience stores etc. (an admin charge may apply).
*Opening hours is subject to change, due to the prevention against COVID-19 pandemic. Please check the updated information, before your visit.

- ① Study for Yuzen kimono, 'Brightness of Snow' 1969
- ② Study for Yuzen kimono, 'Daybreak' 1974
- ③ Study for Yuzen kimono, 'Rose Garden' 1981
- ④ Yuzen kimono, 'A Thousand Flowers' 1969
- ⑤ Yuzen kimono, wickerwork pattern 1972
- ⑥ Yuzen kimono, indigo-tinged tan, gradated lattice design 1993
- ⑦ Yuzen kimono, Scarlet Ridge Pattern 2000
- ⑧ Yuzen kimono, topology of geometric design on white ground, 'Minori' (Ripening) 2013 Isetan Mitsukoshi Holdings
- ⑨ Mitsukoshi shopping bag 'Minori' (Ripening) 2014
- ⑩ Cup-and-saucer set 'Minori' (Ripening) 2016
- ⑪ Study in Green 12 1990 Hiroshima Prefectural Art Museum

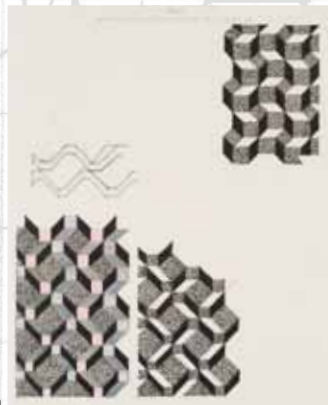


Moriguchi Kunihiko, designated a Living National Treasure for the art of Yuzen dyeing, was born in Kyoto in 1941, the second son of Moriguchi Kakō, also a celebrated Yuzen artist and Living National Treasure. After graduating from the Department of Traditional Japanese Painting at Kyoto City College of Fine Arts (now Kyoto City University of Arts), he received a French-government bursary to study at the École Nationale Supérieure des Arts Décoratifs in Paris. By boldly combining the concepts of graphic design he acquired in Paris with geometric patterns, Moriguchi opened up new creative territory which broke the mould of the 'traditional craft' of Yuzen dyeing. Moriguchi's work as a Yuzen artist is not limited to kimonos; he has also collaborated in numerous design projects, applying his distinctive series of evolving surface patterns to products for Japan's long-established department store Mitsukoshi, the UK's iconic Liberty London and the French porcelain maker, Sèvres. Born of a long historical accumulation of techniques and sensibility, these works can be considered the actual physical embodiment of Yuzen dyeing and design that Moriguchi gives back to society.

The current exhibition showcases Moriguchi's art from the beginning of his career up to the present day, presenting outstanding kimonos, the drafts used to make them, and a variety design-related work: by displaying all these aspects of his oeuvre together under one roof we hope to give a full

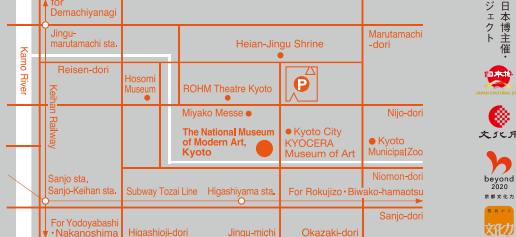
Yuzen Design

picture of Moriguchi's creative output emerging from the multiple intersections between Yuzen dyeing and design, tradition and modernity, East and West.



The National Museum of Modern Art, Kyoto (in Okazaki Park)

Okazaki Enshōji-chō, Sakyo-ku, Kyoto, 606-8344
Tel: 075-761-4111 Homepage: <https://www.momak.go.jp/>



Transport
By JR and bus: From JR Kintetsu Kyoto Station (Stop A1) take City Bus No.5 heading for Ginkakuji-Iwakura. The bus stops immediately outside the museum at 'Okazaki Kōen, Bijutsukan, Heian Jingu-mae'. From JR Kintetsu Kyoto Station (Stop D1) take City Bus No.100 (rapid) heading for Kiyomizu-dera-Ginkakuji. The bus stops immediately outside the museum at 'Okazaki Kōen, Bijutsukan, Heian Jingu-mae'.
By Hankyū or Keihan Railway and bus: From Hankyū Karasuma Station, Hankyū Kyoto Kawaramachi Station or Keihan Sanjō Station take City Bus No.5 heading for Ginkakuji-Iwakura. The bus stops immediately outside the museum at 'Okazaki Kōen, Bijutsukan, Heian Jingu-mae'. From Hankyū Karasuma Station, Hankyū Kyoto Kawaramachi Station or Keihan Gion-Shijo Station take City Bus No.46 heading for Gion-Heian Jingu. The bus stops immediately outside the museum at 'Okazaki Kōen, Bijutsukan, Heian Jingu-mae'.
Other bus routes: Five minutes' walk from 'Okazaki Kōen, ROHM Theatre Kyoto, Miyakomesse-mae' bus stop. Approximately ten minutes' walk from 'Higashiyama-Nijo, Okazaki Kōen-guchi' bus stop.
By Subway: Approx ten minutes' walk from Higashiyama Station, Subway Tōzai Line.
By Car: The museum does not have its own car park. Please use nearby paid parking facilities. Visitors using parking facilities in Okazaki Park can get a parking discount when they purchase museum tickets (one car per visit); please bring your parking ticket with you to the museum.

共催展「Moriguchi Kunihiko 展」
令和2年度日本博主催
MORIGUCHI KUNIHICO 展
大分県立美術館
beyond 2020
文化庁